



# Simple Pot Holder Pattern

## Materials:

- 1/4 yard of woven cotton fabric for front and back of the pot holder.\*
- 1/4 yard of Thermal Batting
- 1/4 yard of Cotton Fiber Batting
- 1 spool of Matching Cotton Thread
- 1 package of matching Wide Double Fold Bias Tape
- Pins or Clips
- Ruler
- Scissors

\*Note: If you want to have a different fabric on the front and back, you will need at least 9 inches of each fabric.

1inch.

Print this sheet first! Make sure this square measures 1" x 1".

Printing Instructions:

Print at 100%, do not scale.

W!BEASTLYBOOTIQUE.COM



# Simple Pot Holder Pattern

Cut 2 of Fashion Fabric

Cut 2 of Thermal Batting

Cut 2 of Cotton Batting

WWW.BEASTLYBOOTIQUE.COM

1/4" Seam Allowance



# Instructions

Step 1: Sandwich your Termal Batting and Cotton Batting between your front and back fabrics. Front and Back Fabric should be right side up. Use a basting stitch 1/4 inch from th edge of fabric.



Step 2: Using a ruler and chalk, draw a line down the center front at a 45 degree angle. Place lines 1 inch apart from the center line parallel on either side.

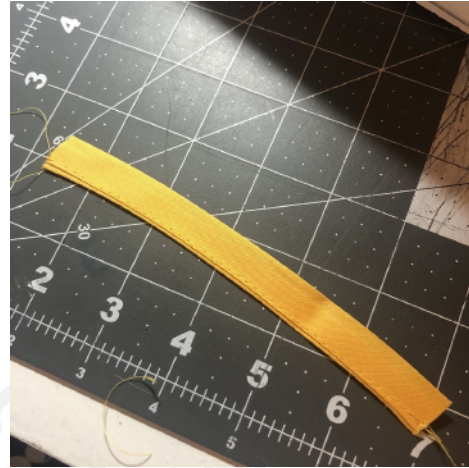


Step 3: Stitch down each line using a long straight stitch with cotton thread. Repeat step 2 and 3 for the opposite direction until your pot holder is quilted.

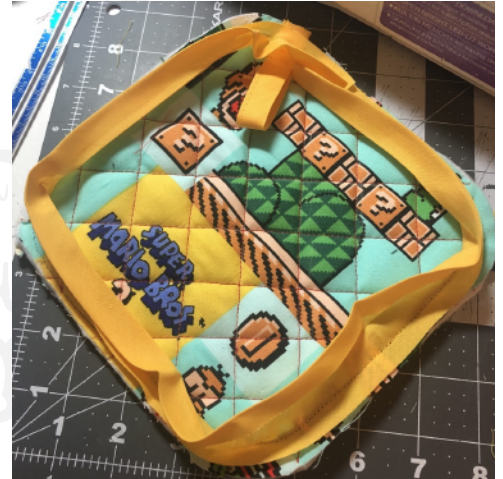




Step 4: Cut a 6 inch strip of bias tape and set aside. Next, prepare your Bias Tape by folding and pressing the edge up 1/2 inch. Make sure you do not over iron and lose the fold lines of the bias tape. Take your 6 inch strip and use a straight stitch to sew the edge shut. This will become the loop of your pot holder.



Step 5: Pin or clip your pressed bias tape around the edge of your quilted fabric. Place your stitched piece of bias in a loop under the pinned bias. Stitch the bias in the first fold of the bias tape.

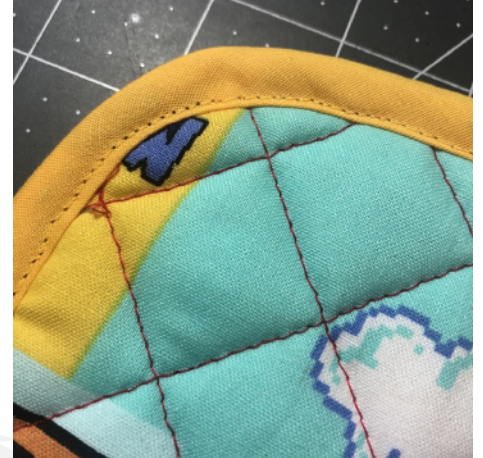
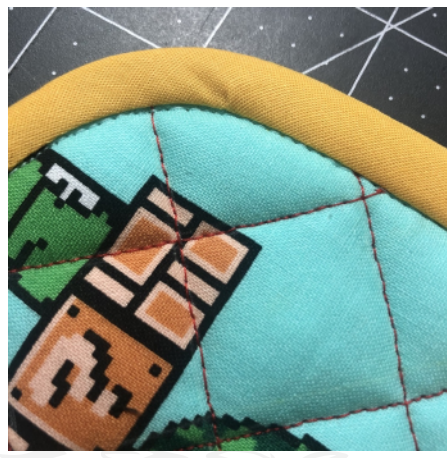


Step 6: Trim the edge so it is flush with your stitched bias tape. Fold over the bias and clip.





Step 7: Using a complimentary thread to your quilted fabric in the top thread and a complimentary thread to your bias in the bobbin, carefully use a straight stitch right up against the top bias. Do not stitch the bias tape itself, but rather the small groove where the pot holder and the bias tape meet.



Step 8: Fold the loop of bias tape up and top stitch using a complimentary thread in the top and bobbin.



Congratulations! You have made yourself a nifty new pot holder!  
Remember to test it for heat protection prior to use.